



FOUNDATION FOR APPALACHIAN OHIO

2016
**ANNUAL
REPORT**



January 20, 2017

Dear Friends,

2016 was a momentous year! Because of your gifts, FAO gave more grants in 2016 than in any previous year, investing a record-breaking \$1.5 million in nonprofits, schools, and students. Twenty-one new funds were created and our local philanthropy-building initiatives expanded substantially. This all resulted in a tremendous number of new opportunities for the citizens and communities of Appalachian Ohio.

As we reflect, we realize much of the story about 2016 will be told in future years – not only as endowments grow to give more, but as we all rise to the challenge extended to us in September when Jeff Chaddock and Mark Morrow pledged to leave 97% of their estate to charities within Appalachian Ohio. With their pledge, Jeff and Mark encouraged us all to make a plan for our estate giving now, urging us to be as intentional with our planned gifts as we are with our ongoing gifts.

As you consider your giving, we want you to know that what is most special to us at FAO is learning what you are passionate about and helping you to make a difference in it. That's why we always ask ***"What's Closest to Your Heart?"*** As a community foundation, we are a one-stop shop for giving to many causes and ensuring your intentions are stewarded forever. It is amazing to see the impact your gifts are making.

Again and again this year, we at FAO felt like we had front row seats to some of the greatest acts of generosity and vision occurring today. We thank you and pledge to continue to be your partner in achieving the charitable dreams closest to your heart.

In gratitude,

Ronald Strickmaker
Chair, Board of Trustees



Cara Dingus Brook
President & CEO





WHAT'S
CLOSEST TO
YOUR **HEART?**

NEW FUNDS

FAO welcomed 20 new funds in 2016.

DESIGNATED & ORGANIZATIONAL FUNDS

William M. and Janet P. Betcher Memorial Endowment for Library Services to honor the legacies of librarians William and Janet Betcher through annual support to the public library systems in Athens, Meigs, and Vinton counties.

Margaret and Frances Channel Fund to support the Athens County Humane Society in spaying and neutering cats in the Athens, Ohio area.

Field of Hope Community Campus Fund to support the work of the Field of Hope Community Campus, a faith-based community and outreach center in Gallia County.

John Glenn Astronomy Park Fund to support construction and operation of an astronomy education and recreation center in Hocking County's Hocking Hills State Park.

iBELIEVE in Student Leadership Endowment Fund to provide opportunities for Appalachian youth to develop leadership, communication, and problem-solving skills.

Nada Kerr Fund to Support Books for Kids in Athens to provide books to kindergarten through third grade students at East, West, The Plains, and Morrison-Gordon Elementary Schools in Athens County to encourage summer reading.

Landrum Endowment Fund to support the Ross County Board of Developmental Disabilities, known locally as The Pioneer Center, in its work to improve the lives of citizens with developmental disabilities.

DONOR-ADVISED FUNDS

Cara and Dominick Brook Family Fund to provide donor-advised grants.

Christine Knisely Fund to provide donor-advised grants.

Thelma Grace Smith Family Fund to provide donor-advised grants focused on creating opportunities in Monroe County.

FIELD OF INTEREST FUNDS

Nelsonville Foundation Fund to create opportunities for the citizens of Nelsonville, in Athens County, through grantmaking and by supporting and inspiring philanthropy in the community.

FUNDS THROUGH PLANNED GIFTS

The Chaddock Legacy Fund will support the Dairy Barn Cultural Arts Center, the Southeast Ohio History Center, the Jeff Chaddock Scholarship for Appalachia at Ohio University, the Kennedy Museum of Art at Ohio University, the Ohio University Press, animal welfare in Athens County, and the Foundation for Appalachian Ohio in stewarding the Zenner House as a resource for nonprofits and the creation of the annual Chaddock Award for Philanthropy.

The Michelle Hart Legacy Fund will provide educational support to youth through student scholarships.

SCHOLARSHIP FUNDS

Crooksville Arts Council and Community Bank Scholarship Fund to provide scholarships to students from Crooksville, in Perry County, in their pursuit of post-secondary education.

Myron Fishel Scholarship Fund to support educational scholarships for Guernsey County residents pursuing post-secondary education.

Guernsey County Board of Developmental Disabilities Scholarship Fund to provide post-secondary education scholarships to students who are Guernsey County residents and eligible for services of the Guernsey County Board of Developmental Disabilities.

James R. Milligan Legacy Fund to provide scholarships to members of the National Honor Society at Cambridge High School in Guernsey County to honor the memory of James R. Milligan, a former Cambridge High School student.

The Weissinger Family Memorial Scholarship Fund to provide an annual scholarship to a graduating senior of Lakota High School who is an active member of Future Farmers of America.

SCHOOL ENDOWMENT FUNDS

Goshen Education Foundation Fund to support and enhance the educational experience, including extracurricular and academic activities, of Goshen Local School District students and staff in Clermont County.

River High School Alumni and Friends Fund to support the students and teachers of River High School in Monroe County annually through classroom mini-grants and scholarships.

FUND SPOTLIGHT: Librarians Inspire a Gift to Communities

We all think of our libraries as centers of learning and imagination. They are where we first read about adventures on the high seas, explored mysterious caves, blasted off into space, and slayed dragons with our fellow princesses. It's where we share the magic of storytime with our children. Longstanding community partners, libraries can be the lifeblood of our towns and counties and serve as a refuge, friend, and community servant.

When an anonymous donor decided to open a fund to support library services in Athens, Meigs, and Vinton counties, it was to not only honor the vital role our libraries play, but to celebrate the legacies of two librarians, William "Bill" and Janet Betcher.

Bill and Janet were dedicated librarians, working at the collegiate and elementary levels in our region, and even at the Library of Congress! Though their library careers took them to many places, including Washington, D.C., Janet's Appalachian Ohio roots brought them back home.



Janet and Bill Betcher

Through annual grants, the Fund will give library directors the chance to support the library services they believe will best fit, inspire, and engage their citizens and communities. Now, their legacies will live on in libraries throughout Athens, Meigs, and Vinton counties, as patrons of all ages experience new worlds and opportunities through the magic of the library.

CELEBRATING
\$1.5 MILLION
IN GRANTS IN 2016!



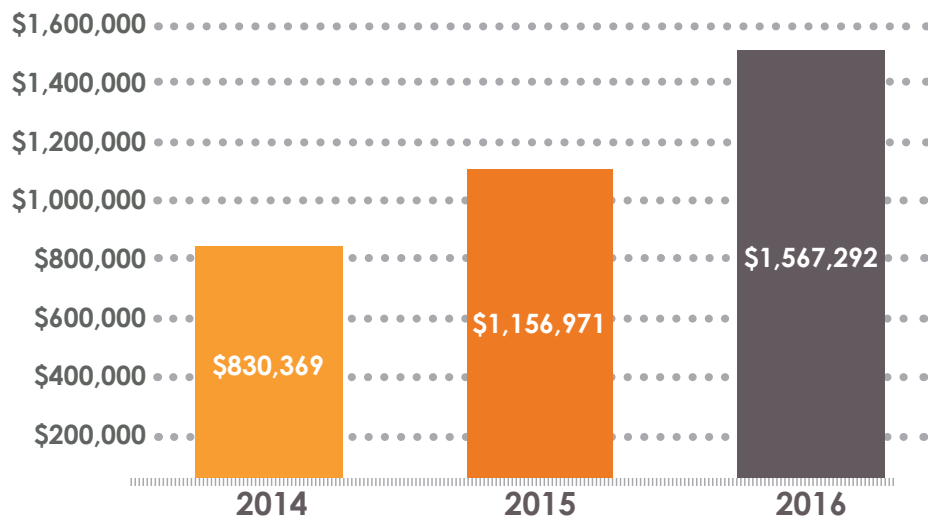
GIVING GRANTS

Thanks to your gifts, students, schools, nonprofits, and communities throughout the region benefitted from nearly 500 grants in 2016. While we can't share all of these stories in these pages, we hope this story from Perry County will give you a sense of the difference each grant is making.

With a grant from FAO's Community Foundation for Perry County, students in the New Lexington City School District accessed dental care. **Because of this grant, New Lexington students who do not regularly visit a dentist received a dental exam**, including x-rays, a cleaning, sealants, fluoride treatments, fillings, and, when necessary, extractions. Perhaps the best part of the program is that it developed a public-private partnership to ensure the dental care is continued in future school years.

Now, that is something to smile about!

THANK YOU FOR GROWING OUR GRANTMAKING!



FAO GRANTS AND SCHOLARSHIPS IN 2016

\$58,685	29 Arts and Culture Grants
\$74,511	24 Community and Economic Development Grants
\$677,654	72 Education Grants
\$75,027	44 Environmental Stewardship Grants
\$366,500	62 Health and Human Services Grants
\$314,915	268 Scholarships

TOTAL
\$1,567,292 499 GRANTS AND SCHOLARSHIPS

OUR BLUEPRINT

Five areas of investment are essential to growing and sustaining abundant opportunities in Appalachian Ohio – areas we call the *Pillars of Prosperity*.

They are the five areas that enliven our communities, uplift our spirits, and spark our passions. Each one is essential, but it is only when all five of these areas have the resources to work in harmony in a sustainable, long-term way that we can begin to overcome complex problems like generational poverty. Our greatest impact will come when we grow these five Pillars together by giving to the area we are each most passionate about.



FAO created endowment funds in these five areas to grow flexible resources FAO can use to expand opportunities to more citizens and communities. FAO will use the interest and earnings from these endowment funds to expand the impact of successful initiatives. Much like how FAO has taken the model of one county-focused fund in Guernsey and helped ten other communities to create their own funds, the Pillars will help more citizens benefit from proven initiatives.

Fortunately, the funds already under FAO's management and the donors who partner with us on them are powerful collaborators for identifying these efforts. On pages 11 and 12 of this report, you will find a list of more than 175 funds that donors have created within FAO to advance opportunities in one or more of the Pillars areas.

In 2016 alone, these funds invested more than \$1.5 million in grants and scholarships throughout Appalachian Ohio. As we grow the Pillar funds, we can invest in what we've learned from these grants.

The grant from a community-focused fund highlighted on the previous page is a perfect example. It provided children in a Perry County school district with access to dental care and seeded the development of a public-private partnership to sustain the initiative into future school years. It not only helped children access dental care, but revealed a model from which other communities can benefit. As we build our Health and Human Services Pillar, we will use the resources generated to investigate and develop ways to grow this program and others to reach more students.

When we look to the future, we see the Pillar endowments as central to how good work and ideas can grow for the benefit of our citizens. We're excited that this vision for the future is already beginning with our first grants awarded in 2016 in the Arts & Culture and Education Pillars (the sidebar on the page to the right highlights one Education Pillar grant). These grants are growing FAO's efforts to reach more citizens and they are just the start.

But for FAO to grow them further and to identify additional efforts worthy of grants, we need two things. We need to grow the endowment funds that will generate grants for many future generations, and we need to grow funds that can be invested in today's most promising efforts and address pressing needs.



Mary Kaufmann and Jason Braddock of *Easy as Pi* celebrate being one of FAO's first Education Pillar grantees with FAO's Cara Dingus Brook. (Photo Courtesy of Kellogg Photography)

FAO's Pillar funds present donors with unparalleled opportunities to ensure their gifts accomplish the most good possible. When you give to an FAO Pillar endowment, your gift:

- Enables the expansion of proven initiatives to help more people;
- Is matched dollar-for-dollar up to \$100,000 per Pillar through a generous matching gift from Ohio CAT (the Education Pillar has already met its match!);
- Combines with other gifts to produce the large investments necessary for transformational change; and
- Builds permanent capacity to sustain results.

FAO is at the beginning stages of building the endowment needed to support our **Pillars of Prosperity** grantmaking. That means gifts to the Pillars have the opportunity to grow the Pillars permanently, but it also means an annual gift to FAO will be an investment in the very first Pillar initiatives. *Turn the page to learn how your annual gift makes a difference.*

DID YOU KNOW?

Because of a special matching gift FAO received from Ohio CAT, donors can create **their own named endowment** to support one of the Pillars for \$5,000 instead of the typical \$10,000, while the match lasts!

OUR FIRST PILLAR GRANTS

As a result of your annual gifts, FAO was able to award a number of inaugural Pillar grants in 2016.

One such grant is supporting an innovative math program, *Easy as Pi*, to expand its reach, growing from serving schools in four counties to reach schools in neighboring counties, possibly even doubling school participation. *Easy as Pi* was developed by a community leader who remembers her own struggles to be confident in math. With a mission to make math fun and approachable for middle school students, the program forms math teams, drumming up the same excitement and engagement for math as is often found among sports teams.

Easy as Pi provides support to teachers in leading the teams and in helping students gain comfort using a free, online tutoring tool, The Khan Academy (www.khanacademy.com), that can continue to be a resource and guide for students as they advance in math through their high school and college years. *Easy as Pi* has been integral to helping more than 100 middle school students build their confidence in math at a crucial stage in their educational development, and with this year's grant will expand to serve many more students.



Easy as Pi Math Team
(Photo: Mary Kaufmann)

YOUR DREAM INSPIRES OTHERS

Whatever your dream, **FAO can help you match your gift with your passion.**

At FAO, we always start with one question: **What's Closest To Your Heart?** It's an important question that leads our discussions with our donors and partners. It's what's at the center of a gift and serves as our guide to helping you make a difference. While everyone's answer to this question is different, the common thread is that each answer inspires others.

We all remember the story of Hazel Syphers from last year's report. Hazel was a Morgan County woman who had a very big idea. She wanted to make sure that every child celebrating Christmas across the county could open a present on Christmas morning. This was no simple goal, but through Hazel's will she was able to create a fund at the Morgan County Community Fund at FAO to make it happen. The fund created through Hazel's estate has now given over 700 gifts to children over its first two years and perhaps even more remarkably, it has expanded the number of volunteers involved in the project from four volunteers in its first year to 70 this second year. Hazel's wish to bring Christmas joy to children through her estate has brought a community together.

We've seen this time and again. The first fund created for a community at FAO was in Guernsey County. The start of this effort inspired over 30 funds to open for the benefit of Guernsey County citizens, totaling \$7 million for the county. Last year, these funds gave nearly \$500,000 back to nonprofits, schools, and students in Guernsey County. One person or one idea often sparks a fire in others when they see how they can be a part of creating change.

FAO was created to help you make a difference in the ways that are most important to you. Whether you dream of supporting a specific community, nonprofit, or school or want to give broadly

to education, FAO can help you match your gift with your passion. No matter what you imagine doing, we're sure your vision and generosity will inspire others to join you in creating opportunities for Appalachian Ohio's citizens and communities.

And that's why having so many different answers to **"What's Closest to Your Heart?"** is so important. Because it's when all of our different gifts combine that we can grow a region abundant in possibility.

THE DIFFERENCE YOUR ANNUAL GIFT CAN MAKE

With an annual gift to FAO, your answer to **What's Closest to Your Heart?** can simply be creating opportunities in Appalachian Ohio. We are using your annual gifts prudently to launch our **Pillars of Prosperity** grantmaking and to provide the support necessary to help transformational initiatives expand to reach more people.

Interested in becoming a shareholder in FAO and its **Pillars of Prosperity** efforts? Some donors make gifts over a period of a few years to more deeply invest in the grantmaking programs of the **Pillars of Prosperity** while the endowments grow. To become a part of this donor movement, contact FAO at 740.753.1111 to learn more.

MAPPING OUR IMPACT

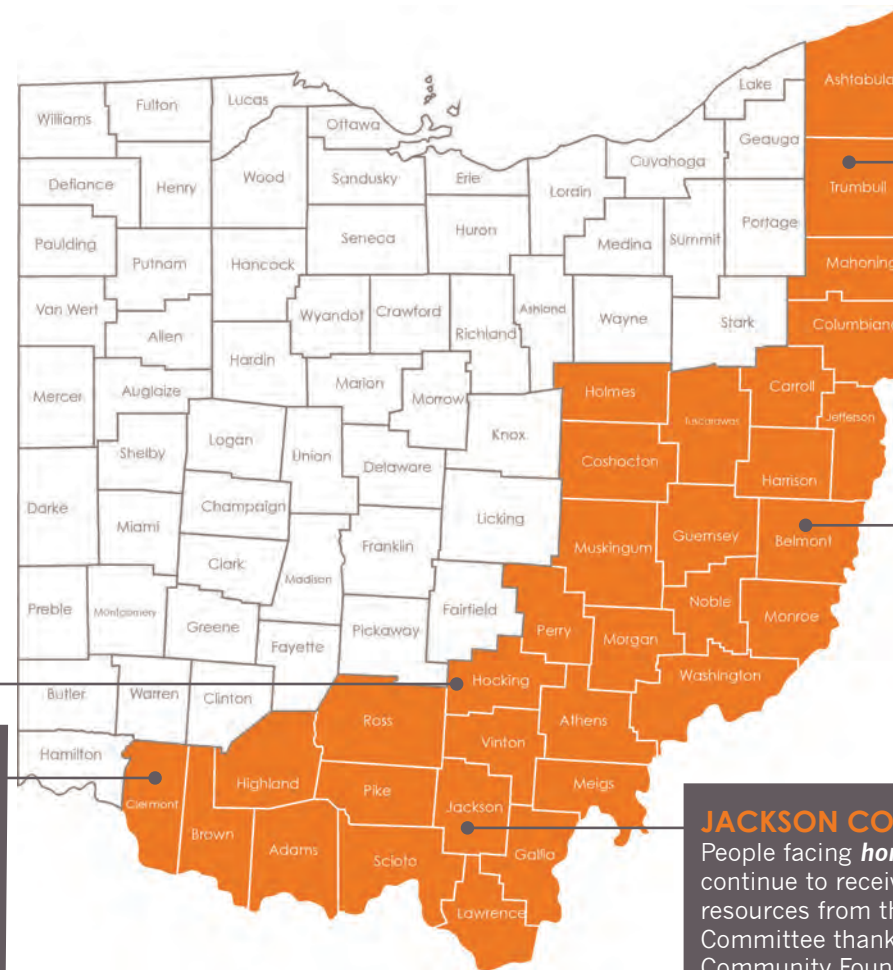
FAO partners with donors and communities throughout the 32 counties we serve to help them give to what's closest to their hearts. Thanks to donors like you, FAO gave nearly 500 grants and scholarships in 2016, totaling over \$1.5 million in support to our communities and citizens. We've highlighted just five grant stories here.

HOCKING COUNTY:

Logan High School students will know first-hand what it really takes to power **electronics** in our homes by measuring energy used and visiting a power plant where that energy is created, thanks to a grant from the AEP Access to Environmental Education Endowment Fund, a **field of interest** fund at FAO.

CLERMONT COUNTY:

Students in the Batavia Local School District had the opportunity to become artists themselves and perform under the bright lights of the stage in **Seussical the Musical** thanks to a grant from the Batavia School Foundation Fund, one of FAO's **school endowment** funds.



TRUMBULL COUNTY:

Daniel Bancroft is passionate about environmental stewardship. Thanks to a **scholarship** from the Ora E. Anderson Scholarship Fund, one of FAO's many donor-established **scholarship** funds, he is studying to pursue a career in ecological conservation.

BELMONT COUNTY:

All ninth-graders across seven high schools in Belmont County will receive American Red Cross **CPR training** thanks to a grant from the Gulfport Energy Fund, one of FAO's corporate **donor-advised** funds.

JACKSON COUNTY:

People facing **homelessness** in Jackson County will continue to receive transitional housing and other resources from the Jackson County Homelessness Committee thanks to a grant from the Jackson County Community Foundation, one of FAO's **community** funds.

FUNDS

as of December 31, 2016

Pillars of Prosperity Funds for FAO grantmaking



Arts &
Culture
Fund



Community
& Economic
Development
Fund



Education
Fund



Environmental
Stewardship
Fund



Health &
Human
Services Fund

COMMUNITY FUNDS

Community Foundation for Perry County
Gallia Community Foundation
Guernsey County Foundation
Harrison County Community Foundation
Highland County Community Foundation
Jackson County Community Foundation
Meigs County Community Fund
Monroe County Community Foundation
Morgan County Community Fund

UNRESTRICTED FUNDS

Bill C. Campbell Memorial Endowment
Tom and Joyce Johnson Discretionary Endowment

DESIGNATED FUNDS

William M. and Janet P. Betcher Memorial Endowment for Library Services*
Margaret and Frances Channel Fund*
Connect Appalachia Broadband Initiative (CABI) Fund
Gallia County Fair Relocation Fund
Leadership Guernsey Fund

Nada Kerr Fund to Support Books for Kids in Athens County*

Tessa Logan Legacy Fund
Perry County Historical and Cultural Arts Society Fund
William L. Phillips Fund
Southeastern Ohio Symphony Orchestra Endowment
Clovis and Ada Strausbaugh Fund

DONOR-ADVISED FUNDS

Anonymous Fund of the Guernsey County Foundation Family of Funds
Cara and Dominick Brook Family Fund*
Chad Clay Memorial Fund
Gallipolis/Gallia County Bicentennial Fund
Grandma's Gifts Fund
Huffman Family Fund
Christine Knisely Fund*
John and Char Kopchick Legacy Fund
Ed and Carla Lowry Family Fund
McClelland Fund
Virgie Lee McLaughlin Fund
JM Morgan Fund
Frank and Esther Ricketts Memorial Fund
Kevin Ritz Family Foundation
The Saint Dymphna Fund

The Scholl Family Foundation
Thelma Grace Smith Family Fund*
Southeastern Ohio Hunger Fund
Sara Lee Stevens-Youngs Family Memorial Fund
Stockmeister Family Fund
Loran and Shirley Stutz Fund
Supporting Families Fund
Supporting Student Success Fund
Tostenson Family Foundation
The Charlie Wilson Family Education Fund

CORPORATE DONOR-ADVISED FUNDS

Bellisio Foods Foundation
Chevron Community Fund
Gulfport Energy Fund
Ohio Valley Bank Foundation
Statoil Monroe County Energy Fund

FIELD OF INTEREST FUNDS

AEP Access to Environmental Education Endowment
Ora E. Anderson Conservation Fund for Appalachian Ohio
Blake and Underwood Student Learning Grant Fund
Children, Youth, and Families Fund

Economic and Community Development Fund
Emergency Needs Fund
Entrepreneurship Development Fund
Hazel Post Fisher Community Fund
Gallia County Arts and Culture Fund
Gallia County Downtown Revitalization Project Fund
Helen Grettler "Got Music" Endowment Fund
Dale Hileman Legacy Fund
Bob and Ruth Holland Community Fund
Hoops for Heart VFD Fund
David Hostetler Legacy Fund
iBELIEVE Foundation
ICAN! Classroom Enrichment Fund
I'm a Child of Appalachia Contest Fund
The Jenco Foundation Fund
Leadership Fund
Longaberger Fund
Robbie and Jack Lyttle Fund to Support Classroom Teachers

FAO welcomed 20 new funds this year, including three future funds created through estate gifts.

***Indicates new fund opened between January 1, 2016 and December 31, 2016.**

FUNDS

as of December 31, 2016

James R. Milligan Legacy Fund*

Morgan County Youth Development Fund
Morgan Foundation Christmas Wish for Kids Fund
Donald R. Myers Legacy Fund to Support Partnership in Appalachian Ohio

Nelsonville Foundation*

John and Mary Lee Ong Scholarship for Appalachian Ohio Teachers
Outreach Emergency Disaster Shelter Fund
Partners for Your Health Fund
Perry County Hunger Fund
September 11 Fund
Somerset Community Fund
Supporting Community Philanthropy in Appalachian Ohio Fund
The Yellow Root Fund for Arts, Heritage, and Culture

ORGANIZATIONAL FUNDS

Appalachian Community Visiting Nurses Association Fund
The Athens Conservancy Fund
Byesville Rotary Fund
Chester-Shade Historical Association Fund
The Clay Center of Ohio Endowment
COAD Appalachian Development Fund
Earthtouch-Lou DeWein Conservation Stewardship Fund
Field of Hope Community Campus Fund*
Friends of the Hocking Hills State Park Fund
The Fund for Appalachian Ohio Resilience
John Glenn Astronomy Park Fund*
Guernsey County Senior Citizen Center Fund

HAVAR Funds
Haven of Hope Endowment
Miriam Hawes Legacy Endowment Fund for the Rolling Hills School District
Hocking Area End of Life Care Fund
iBELIEVE in Student Leadership Endowment*
Jewett United Methodist Church Endowment
Kiwanis Coats for Kids Fund
Paul Knoop Conservation Education Fund for the Appalachia Ohio Alliance
Landrum Endowment*
Lewisville & Community Volunteer Fire Department Fund
Living Word Outdoor Drama Endowment
Ohio Appalachian Collaborative 2.0 Fund
Perry County Sportsman Club Endowment
Rural Action Fund for a Sustainable Future
Southeast Ohio Regional Medical Center – Guernsey Health Foundation
Stafford Cemetery Endowment
Stuart's Opera House Endowment
United Appeal for Athens County Endowment
United Seniors of Athens County

SCHOLARSHIP FUNDS

The AK Steel Foundation Scholarship
Ora E. Anderson Scholarship
Forrest Bachtel Scholarship
Lee Beckett Legacy Scholarship
Bellisio Foods Scholarship
Catherine Blankenship Scholarship
Briggs Family Scholarship
Murray and Lulu Brown Scholarship
Cambridge High School Class of 1957 Scholarship

Cambridge Singers Scholarship
Jenny Cornelius-Woltz Memorial Scholarship
Don Coss Memorial Scholarship
Jeff Cox and Jane Schumacher Cox Scholarship
Crooksville Arts Council and Community Bank Scholarship*
Jesse, Olema, and Ralph Drake Scholarship
William and Frances Dunlap Scholarship
Lester D. and Thelma I. Ellwood Scholarship
Bob Evans and Wayne F. White Legacy Scholarship
John and Elsie Exenkemper Scholarship
Myron Fishel Scholarship*
Jennifer Garrison Public Service Scholarship
Zelma Gray Medical School Scholarship
Guernsey County Board of Developmental Disabilities Scholarship*
Guernsey County Education Assistance Grant Fund
Bruce and Dolores Hannah Scholarship
Paul and Charlotte Hope Scholarship
Vincent and Gene Hope Scholarship
Inspiring and Supporting Philanthropy Award Fund
Susan K. Ipacs Nursing Legacy Scholarship
Susan K. Ipacs PN2RN Nursing Legacy Scholarship
Charlene Joseph Scholarship
Mary Kackley-Brill Scholarship
Commander Lambert Scholarship
Joseph and Marie Lichtenstein Scholarship
Madison High School Alumni Scholarship

Donald and Catherine Palmer Scholarship
Jack and Clara Reho Scholarship
Paul Sayanek Scholarship
Winnie Mae Sharpe Education Scholarship
Ben and Alyce Shaver Scholarship
Shawnee Alumni Association Scholarship
Dr. Allen Smith Memorial Scholarship
Doug Steele Memorial Scholarship
Ariana R. Ulloa Scholarship
Janet Hursey Koehler Wade Scholarship
The Weissinger Family Memorial Scholarship*
Robert Woodruff and Charles and Elizabeth Woodruff Scholarship

SCHOOL FUNDS

Batavia School Foundation
Cambridge City Schools Alumni and Friends Educational Fund
Citizens for Rolling Hills School Fund
Friends of East Guernsey Education Fund
Goshen Education Foundation*
Husky Education Fund
New Haven School Fund
River High School Alumni and Friends Fund*
Southern Perry County Academic Endowment Fund
West Union Schools Alumni and Friends Educational Fund

You can learn more about these funds by visiting www.AppalachianOhio.org/Funds.

GIVING WITH INTENTION

A Visionary Gift and Challenge

"What do we want those who love and know us to say about us when we're gone?" This is the question Jeff Chaddock, a financial advisor, asks his clients and others as they navigate big decisions and plan for legacies beyond their lives. He calls it the 'Eulogy Test.'



Friends of FAO gathered at the Zenner House in September for the announcement of Jeff Chaddock and Mark Morrow's gift. (Photo Courtesy of Kellogg Photography)

"A eulogy should reflect your passion, your obsession, your drive," says Jeff. "By planning for your gifts through your will, trust, or other assets, the integrity of your life is not broken by death. Your life's work and passion don't have to stop. I want people to know that it's okay to plan for their death early."

As Jeff worked with nonprofits in Appalachian Ohio and beyond, he knew that his own Eulogy Test would lead him to forever support those organizations and missions he is passionately supporting today.

A son of Appalachia, Jeff grew up in Belpre in Washington County and his heart never left the region. His commitment to Appalachian Ohio led him to FAO and it was in FAO that he discovered a philanthropic partner to make his vision of supporting many nonprofits and causes a reality.

On September 22, Jeff and his partner, Mark Morrow, announced they will give 97% of their estate to benefit Appalachian Ohio nonprofits. **They were inspired to publicly announce the planned gift because they hope it will embolden others to join them in planning intentional gifts beyond their lifetimes.**

"I don't care how large or small the amount, to orchestrate your estate planning and your giving is critical," shares Jeff. "Without planning, you're in essence negating or reducing your life's work to not being important. Why wouldn't we take the same care of our death as we do everything else in our life?"

For a variety of reasons, most Americans have not made plans for their estates or feel the plan they have made is incomplete. The Eulogy Test is a simple way Jeff helps his clients begin the planning process. As Jeff will attest, when it is combined with FAO's ability to partner as a backbone organization in their planned giving, the stress can be removed from the process and a sense of peace can take over.

"From my own experience and from working with my clients, I know the feeling of relief that comes when everything is in order," said Jeff. "It feels like you've entered vacation mode. The house is taken care of, nothing is lingering, and now you're free to relax and enjoy."

For Jeff, FAO was a perfect partner for his planning. Through FAO, Jeff could plan to leave gifts to multiple organizations. With the tools and expertise to coordinate Jeff's gift as well as honor his wishes far into the future, FAO brought ease, peace of mind, and maximized tax benefits. Working with FAO also provides the flexibility to change your plan as life changes.

Through the announcement of this gift, Jeff challenged FAO to raise the profile of planned giving and encourage more donors to leave legacies. "FAO offers all of us a kaleidoscope of unlimited opportunities and ways to give. FAO is the perfect one-stop partner to reduce stress about giving and support all of our passions with one plan."



ILLUSTRATING THE GIFT



Thanks to the artistic talents of Kevin Smalley, you can see a visual of Jeff Chaddock and Mark Morrow's gift to support Appalachian Ohio nonprofits when you turn the page. This illustration shows how easily you can give to all things closest to your heart through FAO.

(Photo Courtesy of Tim Fitzwater Photography)



Jeff Chaddock and Mark Morrow (Photo Courtesy of Kellogg Photography)

BENEFITTING APPALACHIAN OHIO NONPROFITS

Through a single planned gift to FAO and FAO's one-stop approach to planning, Jeff and Mark will continue to support the causes and organizations they are passionate about for generations to come, including:

- The Dairy Barn Arts Center;
- The Southeast Ohio History Center;
- The Jeff Chaddock Scholarship for Appalachia at Ohio University;
- The Kennedy Museum of Art at Ohio University;
- The Ohio University Press; and
- Animal welfare in Athens County.

Through the estate, FAO will also receive the historic Zenner House in Athens to serve the nonprofit community of southeastern Ohio as a center for retreats, events, and meetings as well as honoring philanthropists and emerging leaders in the region, in part through the creation of the Chaddock Award for Philanthropist of the Year.



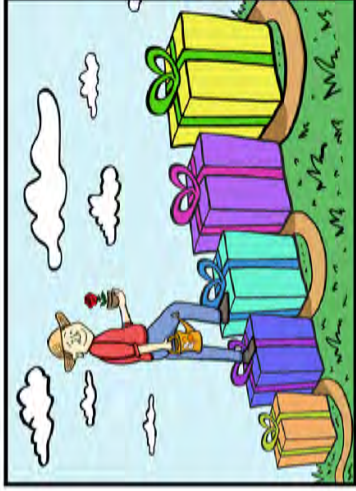
**We work hard during our lives,
growing assets and advancing
careers.**



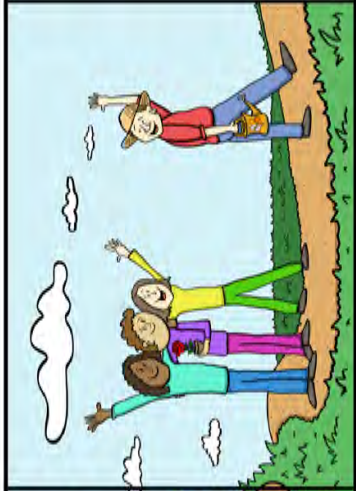
**And we give our time and our
resources to make a difference.**



**But how often do we think about how
our life's passions and values will
carry on?**



**Whether big gifts or small, each of
us has a way to continue making a
difference forever with FAO.**



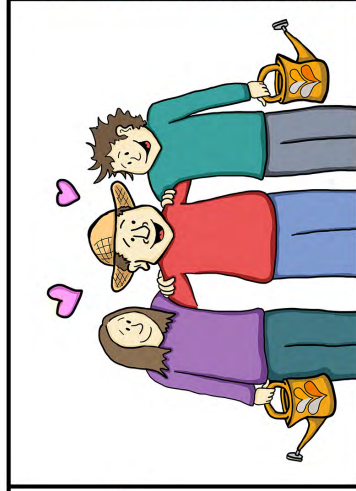
**When it's time to leave, your gifts
can forever support the causes that
were dear to you in your lifetime.**



**With your plan and FAO's partnership,
you can make a difference forever.**



**Each of our gifts will create
opportunities for individuals
and communities.**



**But it is only when we join together
that we will see transformation.**



**Together, we can grow an
Appalachian Ohio abundant in
possibility.**

© 2016 Kevin Smalley



A HEART FOR SCHOLARS

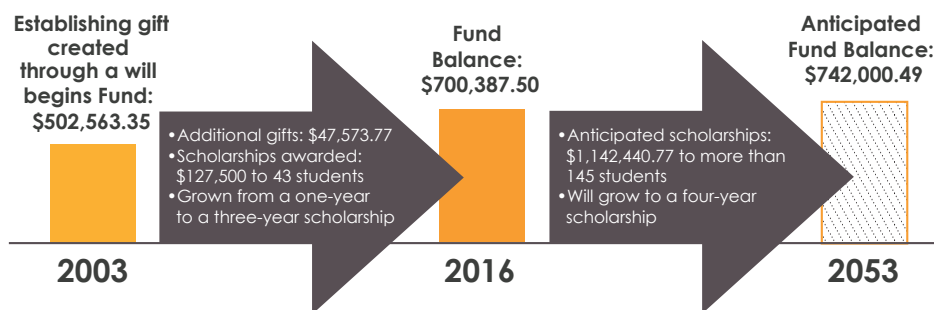
The Power of Endowment: The Forrest Bachtel Scholarship Fund

Even from the distance of Omaha, Nebraska, Dr. Harry Keig held a place in his heart for his hometown of Middleport, Ohio in Meigs County. He always remembered the impact the teachers in his town had on his life, and none more significantly than Forrest Bachtel, a longtime teacher and coach at Middleport High School. With all Coach Bachtel had meant to him, Dr. Keig wanted to find a way to honor his legacy in the community and to help future generations of students pursue their education.

When Dr. Keig died in 2003, he left a gift in his will of \$500,000 to start an endowment at the Foundation for Appalachian Ohio. The idea was for the Fund to continue Coach Bachtel's legacy of serving students forever through a scholarship.

The Bachtel Scholarship recognizes academic achievement and athletic excellence with awards to a young man and a young woman in each category. In its earliest days, the Fund awarded one-year scholarships of \$2,500, but because of the growth of the endowment at FAO over time, it now awards four students scholarships of \$7,500 to be used for up to three years, and will one day grow to four years. The goal is to see the Fund continue to grow in perpetuity, supporting future generations of Meigs High School students.

ENDOWMENT WILL GROW WHILE GIVING \$1 MILLION IN SCHOLARSHIPS



Haiden English and Kelsie Powell are both 2016 graduates who credit the Bachtel Scholarship for making their post-secondary education possible.

Haiden English has always been interested in creating something new. This led her to major in entrepreneurship at Ohio University. "The idea of creating a business is exciting – there are so many things you can create," explained Haiden. She appreciates that people like Dr. Harry Keig created scholarships for Appalachian Ohio students, recognizing their hard work, often with limited resources.



Kelsie Powell discovered her chosen medical field – diagnostic medical sonography – through job shadowing. As part of the allied health program at the University of Rio Grande, Kelsie will learn how to use ultrasounds to examine body organs, from a general and cardiovascular perspective. "I want to work at a hospital in the region to provide quality healthcare to the people here," explained Kelsie.



SCHOLARSHIPS

Together, we gave **268 scholarships in 2016**. FAO is honored to support 48 donor-established scholarship funds in creating educational opportunities.

AK STEEL FOUNDATION STEM SCHOLASTIC AWARD

Columbiana County:

Katie Cook

Gallia County:

Johnny Lively

Guernsey County:

John Barba, II

Tyler Burris

Highland County:

Madison Snyder

Jackson County:

Kyle Turner

Jefferson County:

Jayllex Mills

Mahoning County:

Matthew Heffinger

Muskingum County:

Braden Potts

Scioto County:

Morgan Thornsberry

Washington County:

Adelaide Hirschi

Matthew Neehouse

Kaitlyn SeEVERS

THE ORA E. ANDERSON SCHOLARSHIP

Muskingum County:

Don Ingold

Trumbull County:

Daniel Bancroft

Tuscarawas County:

Johnathan King

BACHTEL SCHOLARSHIP Academic Award

Meigs County:

Jaxon Meadows

Kelsie Powell

Athletic Award

Meigs County:

Haiden English

Tyler Fields

LEE BECKETT LEGACY SCHOLARSHIP

Athens County:

Alisa Kelley

Emily McCulloch

BELLISIO FOODS SCHOLARSHIP

Jackson County:

Kerrigan Hoover

Peyton Miller

Shaw Newsom

Hailee Shover

State of Minnesota:

Zachary Koop

Jordan Mack

CAMBRIDGE HIGH SCHOOL CLASS OF 1957 SCHOLARSHIP

Guernsey County:

Tessa Foraker

CAMBRIDGE SINGERS SCHOLARSHIP

Guernsey County:

Levi Masters

JENNY CORNELIUS-WOLTZ MEMORIAL SCHOLARSHIP

Muskingum County:

Danae Fields

DON COSS MEMORIAL SCHOLARSHIP

Guernsey County:

James Antalis

Maurice Lathan, Jr.

Zavin Orr

Robert Warne

Muskingum County:

Luke Klinehoffer

Cole Larson

Luke Larson

Ryan Long

Benjamin Van Wey

Noble County:

Caleb Heller

Ryan Lovette

JEFF COX AND JANE SCHUMACHER COX SCHOLARSHIP

Guernsey County:

Jenny Larrick

Monroe County:

Brooke Jones

Kylie Milhoan

Clay Weckbacher

LESTER D. AND THELMA I. ELLWOOD SCHOLARSHIP

Guernsey County:

Britt Adams

John Barba II

Alyssa Bartlett
Kristi Bates
Nickolas Bates
Robin Bodner
Reanna Frabel
Logan Helmick
Sondra Jones
Makayla LoChiatto
Anna Mallett
Miranda Miser
Anna Jonét Mitchell
Brady Neuhart
Samantha Perkins
Olivia Rhodes
Samantha Roe
Ryan St. Clair
Trislyn Treherne
Randall Tucker
Alyssa Williams
Samantha Workman

BOB EVANS AND WAYNE F. WHITE LEGACY SCHOLARSHIP

Adams County:

Christopher Meade

Colton Meade

Tyler Ryan

Athens County:

Winter Wilson

Belmont County:

Donald Falbo

Columbiana County:

Alexandria Smith

Highland County:

Hannah Burns

Vanessa McGinnis

SCHOLARSHIPS

BOB EVANS AND WAYNE F. WHITE LEGACY SCHOLARSHIP CONT.

Hocking County:

Morgan Cottrill

Jackson County:

Kyle Turner

Abigail Waugh

Logan Woodyard

Jefferson County:

Rachel Dziewatkoski

Lawrence County:

Bailie Brownstead

Cody Rawlins

Mahoning County:

Matthew Heffinger

Noor Khalaylah

Victoria Stratton

Morgan County:

Sarah Beam

Muskingum County:

April Bartenschlag

Quinci Jones

Braden Potts

Sydney Prince

Kassandra Settles

Noah Townsend

Noble County:

Molly Scheich

Perry County:

Sanae Dutiel

Shelby Garey

Travis Kunkler

Ross County:

Mackenzie Brown

Charles Skaggs

Scioto County:

Lena Harvey

Trumbull County:

Daniel Bancroft

Lindsey Barto

Tuscarawas County:

Johnathan King

Washington County:

Ashton Amos

Lydia Beardsley

Danielle Darling

Cady Lenington

Kaylen Morrison

Kaitlyn SeEVERS

JENNIFER GARRISON PUBLIC SERVICE SCHOLARSHIP

Noble County:

Molly Scheich

Washington County:

Alivia Frazier

Brandon Larsen

Cady Lenington

Kaylen Morrison

GUERNSEY COUNTY EDUCATION ASSISTANCE GRANT FUND SCHOLARSHIP

Guernsey County:

Cole Bennett

Trey Bennett

Zachery Beres

Eric Black

Robin Bodner

Laura Bourne

Samantha Brown

Reid Bugglin

Manny Burch

Kaylie Callihan

Anthony Carpenetti

Matthew Dalton

Dana Davis

Nicholas Dunlap

Victoria Dunlap

Jena Dye

Hunter Dyer

Danae Fields

Lauren Finnegan

Alexandria Fraley

Brittany Fraunfelter

Serra Googins

Sarah Gotschall

Kaleb Graham

Blake Hardesty

Colin Harshbarger

Megan Heady

Logan Helmick

Ayden Howell

Don Ingold

Joshua Jamiel

Rachel Jamiel

Eli Johnson

Chandler Burris Jones

Allison Kenney

Madison Kenney

Ian Kerr

Josslyn King

Clayton Lapp

Kevin Lapp

Maurice Lathan, Jr.

Elijah LePage

William LePage

Sawyer Leppla

Makayla LoChiatto

Amelia Lucas

Tracy Lyons

Trent Lyons

Anna Mallett

Levi Masters

Clay McCauley

Miranda Miser

Dylan Moore



HOW DO SCHOLARSHIPS AT FAO WORK?

DONORS GIVE

- A minimum of \$50,000 to establish a new scholarship,
- \$10,000 to create a fund that will lend support to existing, needs-based FAO scholarships, or
- Any amount to an existing scholarship.

STUDENTS APPLY

At www.AppalachianOhio.org
for the scholarships they are
eligible for.

**GUERNSEY COUNTY
EDUCATION ASSISTANCE GRANT
FUND SCHOLARSHIP CONT.**

William Nelson
Brady Neuhart
Emily Orr
Samantha Perkins
Diana Price
Katelyn Regula
Kelli Reineccins
Olivia Rhodes
Kaitlynn Roberts
Heather Robertson
Aaron Ruby
Kevin Scrudgers
Courtney Smith
Kennedy Smith
Erica Snyder
Christopher Starr
Nathanael Steele
Abigail Tatgenhorst
Kiersten Taylor
Kohl Taylor
Nathan Thompson
Sarah Thompson
Noah Townsend
Trislyn Treherne
Eric Valentine
Katelyn Waggoner
Megan Warne
Alexis Weaver

Lacey West
Kristin Taylor
Amelia Wickham
Austin Wilkinson
Trevor Wilkinson
Alyssa Williams
Emily Yanico
Hallie Zimmer
Samuel Zimmer

**SUSAN K. IPACS NURSING
LEGACY SCHOLARSHIP**

Washington County:
Morgan Smith

**MARY E. KACKLEY-BRILL
SCHOLARSHIP**

Guernsey County:
Abigail Stratton

**MADISON HIGH SCHOOL ALUMNI
SCHOLARSHIP**

Guernsey County:
Kyle Wells

**JAMES R. MILLIGAN LEGACY
SCHOLARSHIP**

Guernsey County:
Ian Kerr
Jessica Lucero

**WINNIE MAE SHARPE
SCHOLARSHIP**

Guernsey County:
Reanna Frabel

**DR. ALLEN SMITH MEMORIAL
SCHOLARSHIP**

Scholastic Award
Jackson County:

Katelyn Exline
Peyton Miller
Logan Woodyard

Community Service Award

Jackson County:
Peyton Miller
Abigail Van Allen
Logan Woodyard

**DOUG STEELE MEMORIAL
SCHOLARSHIP**

Guernsey County:
Samantha Brown
Caryn Hodges

**SOUTHERN PERRY COUNTY
ACADEMIC ENDOWMENT FUND
SCHOLARSHIP**

Perry County:
Makayla Alexander
Garrett Bartley
Korrie Block

Clinton Boring
Austin Collins
Hannah Dishon
Sanae Dutiel
Autumn Garbline
Aubrey Hand
Haley Hurst
Andrew Jeffers
Stephan McGrath
Chelsea Spergin
Traven Wood

ARIANA R. ULLOA SCHOLARSHIP

Meigs County:

Charlea Grant

**WEISSINGER FAMILY MEMORIAL
SCHOLARSHIP**

Seneca County:
Samantha Miller

VOLUNTEERS

Review applications and recommend the students who best represent the donors' intentions.

SCHOLARSHIPS ARE SENT DIRECTLY TO THE ACADEMIC INSTITUTION

FAO

- Helps donors decide on scholarship criteria
- Preserves donor wishes in perpetuity
- Recruits community volunteers
- Promotes scholarship availability
- Manages scholarship funds



FAO'S PILLARS OF PROSPERITY FUNDS

Endowment funds to support FAO's grantmaking in areas fundamental to a vibrant Appalachian Ohio: Arts & Culture, Community & Economic Development, Education, Environmental Stewardship, and Health & Human Services.

ANNUAL GIFTS, UNRESTRICTED FUNDS, & SHARES

Funds FAO will use to advance programmatic initiatives in the **Pillars of Prosperity** areas while FAO is building the permanent endowment described above. The first focus will be to projects that are transformative, sustainable, and likely to help many communities and citizens. Gifts of all sizes make a difference. Donors pledging \$32,000 or more are recognized as shareholders.

COMMUNITY AND FIELD OF INTEREST FUNDS

Funds FAO or a local committee will designate for the benefit of a specific geographic community or charitable purpose.

DESIGNATED, ORGANIZATIONAL, & SCHOOL SYSTEM FUNDS

Funds established to provide support to a specific nonprofit, public organization, school, or classroom. The leadership of these organizations will advise FAO on the use of grant dollars.

SCHOLARSHIP FUNDS

Funds to support students in post-secondary education. Donors have a choice to recommend their own volunteer scholarship selection committee or to assign this task to FAO's Scholarship Review Committee.

DONOR-ADVISED FUNDS

Funds donors create within FAO that function similar to a private or family foundation. Donors can make a gift or gifts to FAO, receive an immediate tax deduction, and then use the fund to support charitable causes they care about far into the future.

OUR CALL TO ACTION

Appalachian Ohio's Philanthropy Gap

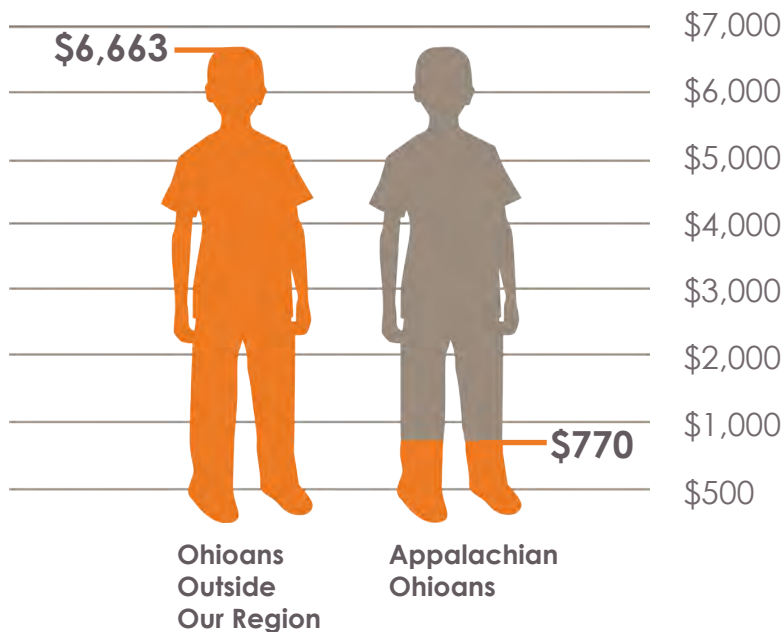
Appalachian Ohio is in the midst of a battle with generational poverty. A great many of our citizens face barriers to educational, economic, and essential quality of life opportunities. At the root of these many challenges, we find an under-capitalization in philanthropic support thwarts efforts to solve deeply-rooted challenges.

If we look at the availability of philanthropic assets statewide, we find our citizens have access to \$770 in per capita philanthropic support while Ohioans outside of our region have access to \$6,663. This means fewer scholarships available to our graduating seniors, fewer programs to help struggling families, less support for public safety concerns, and less investment in and exposure to the arts in all forms.

Closing the philanthropy gap in our region will unleash the potential of our region's changemakers. When we, as donors, choose to invest in the areas closest to our hearts, our philanthropic actions will combine to have the effect of improving every aspect of the region's quality of life.

As we close the philanthropy gap, our region's communities and citizens will have the support necessary for solving generational challenges.

Philanthropic Dollars Per Capita



Source: Foundation Center 2016

MEASURING RESULTS

Follow our region's progress in the **Regional Opportunity Scorecard** and look for the newly-released 2017 edition March 1, on our website at www.AppalachianOhio.org.

I'M A CHILD OF APPALACHIA® NETWORK MEMBERS

January 1 through December 31, 2016

Thank you to all those who made unrestricted gifts to the Foundation for Appalachian Ohio.
Please see page 9 for more information about how your unrestricted dollars are used at FAO!

INDIVIDUALS

Greg and Eileen Adams*
Anonymous (24)*
Michael and Jo Ann Bartimus
Brock Berenato
Joseph and Lynda Berman
Shirley Dunlap Bowser*
Merom and Judith Brachman
Cara and Dominick Brook*
Mike and Pam Brooks*
Stuart and Denise Brooks*
Kenner and Margene Bush*
Marianne Campbell*
Jeffery D. Chaddock and Mark Morrow*
T.J. Conger*
Terry Conner*
Susie Conner*
Ron and Lynn Cremeans*
Matthew Daugherty
Greg DiDonato
Bill and Donna Dingus
Rebecca Dingus
Tamara Dosch
Gifford Doxsee
Matthew Elli and Dawnell Graham*
Jacqueline Evangelista
Sally Evans*
Katy and Doug Farber
Terry Fleming*
David and Joanne Frantz
Clyde Gosnell* and Louise "Omie"
Warner*
Clay and Alice Graham*
Barbara and Drew Hansen*
Michael and Carolina Holtz*
James Hooks
Bonny and Jack Huffman*
Mike and Amy Jacoby
Robert H. "Tad" Jeffrey*
Tom and Joyce Johnson*

Myles and Anne Kiphen
John and Char Kopchick*
Nancy Lahmers and Pete Sanderson*
Matthew Lokay
Jeff Lyttle and Cathy Mayne Lyttle*
Roger and Mary Beth Mace
Dr. R. Craig Mathews
Shirley McClelland*
David McCoy and Christine Knisely
Charles D. McGinnis
Robert and Gayle McLaughlin*
Charles and Marilyn Mechem*
John Molinaro
Geoff and Denise Morgan*
Rebecca and Charles David Mustine
Don and Joy Padgett*
Paul and Marnette Perry
Paul and Debra Prater
Charles Rose
Linda K. Rothman
Christiane and Mike Schmenk*
Dave and Valerie Scholl*
Robert Selder
Joan and Lester Sheehan
Fred and Peggy Shriner
Jennifer and David Simon*
B.J. Smith*
Samuel and Sharon Speck
Guy Spriggs*
Rob Stein*
Alan and Susan Stockmeister*
Janet Shaffer Stout
Ron and Calista Strickmaker*
Governor Bob and Janet Taft
Steve and Kelly Theodosopoulos
Theodore Thomas
Mary K and Marty Walsh
Bruce and Marilyn Wentworth*
David and Degee Wilhelm*
Wilson Family*

Maribeth Wright
Ryan and Carol Wright*
Jo Ellen Diehl Yeary*
Nancy Lusk Zimpher*

ORGANIZATIONS

AEP Ohio*
Amazon Smile
Bagel Street Deli
Baird Brothers Company Foundation*
Battelle
Bellisio Foods*
Jack and Sandy Bortle – Hampton Inn
and Fairfield Inn & Suites*
Chevron*
Columbia Pipeline Group*
William H. Davis, Dorothy M. Davis,
William C. Davis Foundation*
Duke Energy*
FAO Board of Trustees*
Finance Fund*
Fleegal Family Fund of the Columbus
Foundation
Fox Foundation*
Gulfport Energy Corporation*
ICF Foundation*
JPMorgan Chase*
Keybank*
Kidd Family Foundation, Reliable
Staffing Services, Mt. Zion Animal
Clinic*
Longaberger Foundation*
Longleaf Foundation*
McDonald Hopkins*
MPH Hotels*
Ohio Arts Council*
Ohio CAT*
Ohio University*
Ohio Valley Bank*
Ohio's Electric Cooperative

Peoples Bancorp Foundation*
Pioneer Pipe*
Rocky Brands*
Schooler Family Foundation*
STAR Engineering*
Statoil Energy*
Sara Lee Stevens-Youngs Family
Memorial Fund*
J.W. and M.H. Straker Charitable
Foundation*
The Dog Studio
The Staley Fund
TS Training Solutions
US Bank*

IN HONOR OF

Jeff Chaddock
Ron Strickmaker

IN-KIND

Christa Myers
The Magic of Eric Myers
Markay Cultural Arts Center
Stuart's Opera House
Southeast Beverage Company

* Indicates Shareholder.
BOLD indicates Cornerstone
Shareholder.

THANK YOU to all who made a difference by giving to a fund at the Foundation!

January 1 through December 31, 2016

INDIVIDUALS

G. Gregory Abraham
Phillip Ackerman
Matthew Ackermann
John and Alma Allen
William and Sharon Allen
Karen Anderson
Marc Ankerman
Anonymous (25)
Bryan Anstaett
Jeffery Atwater
Chris and Tom Atzberger
Laura Auxter
James and Lois Baker
Jean and Marvin Baldrige
Laci and Matthew Balster
Robin Barebo and Terry Radekin
Scott Barr
Benjamin and Mary Bartilson
Nancy and Virgil Bartlett
Matt Bealater
Levoy Beckett
John Bendfeldt
David Bennett
Chad and Angela Bice
Beau Billet
Kim and Ray Blackburn
Charles and Carol Blyth
Pier PZ Bocchini
Brooke Bockelman
Joshua Bodimer
Mary Tharp Bope
Joe Bostic
Donald and Theresa Bowers
Marjorie and Steve Braden
Cara and Dominick Brook
Shoshanna Brooker
Mike and Pam Brooks
John and Linda Brose
Ashley and Dustin Brown
Chad Brown
Joan Brown
Kenneth and Adele Browne
Greg and Lynne Browning
Joe Browning
Melissa Burchfield

Al and Jill Burger
David and Lisa Burleson
Kail and Phyllis Burleson
Kenner and Margene Bush
Larry and Carol Caldwell
Clint Cameron
Janet Campbell
Marianne Campbell
Sharron Carruth
David Carter
Michael and Betty Jo Carter
Jeffery D. Chaddock and Mark Morrow
Jennifer Chandler
Shayna Chapman-Burris
Melissa Chorey
Raymond Chorey
Sheryl Chouinard
Leisa and Jeffrey Christafore
Marcia Christie
Ron and Brenda Clark
Michael and Jackie Cluxton
Terry Coffman
Alan Cohen
Dean Cole
John Cole
Tim Cole
Maralyn Conaway
TJ Conger
Janine and Norman Conrad
Garth and Amy Coombs
Beverly Cooper
Mary Boone Costello
Jill Cottone
Ken Cottrill
Jeff Cox and Jane Schumacher Cox
Kory Crabtree
Linda Crabtree
James Craft
Jameson Crane, Sr.
Jameson and Meredith Crane
Loann Crane
Paige and Michael Crane
Dr. Rob and Shannon Crane
Ron and Lynn Cremeans
Molly Cribbet
Jaime Crooks

Trent Cubbison
Duane and Loretta Dallman
Ruth Bope Dangel
Raymond Darnell
Connie Davidson
Ronald Davis
Louis Dawkins
Mary Lou and Lincoln Dearth
Dan and Diane DeLawder
Sonja Delaney
Chris Demel and Claudia
Gonzalez-Vallejo
Jeff Dennis
Dean and Cathie DeRolph
Judy and Jerry Dillon
Joanne Dole
Garrett Dowdy
Anna and Dale Downey
David and Karen Duell
D. Reber Dunkel and Kathryn Kight
Dwight and Angela Dunn
Christopher Dutton
Brent and Teresa Eastman
Jonathan Edwards
Karen Elliot
Mary Ennis and Jeremy Keller
Dr. Ronald and Joyce Erkis
Margaret Evans
Barth Falkenberg
Robert and Dottie Fellure
Barbara Fergus
Cynthia Ferguson
Terry and Judy Fleming
Lawrence Flick
Chalisa Fonza
Joe and Melinda Foster
Robert Foster
Karen Frank
Linda Richards Franklin and Fred Gord
David Fryogle III
Roy Gabbert, Jr.
Peter Gaudet
Mary Geissman
Lynn Gellermann
Ryan Gensler
Kristina Borovicka Gerig

Michael Geringer
Larry and Joyce Gerstner
James and Sara Gilfert
David and Angela Gilliam
Gene and Bonnie Goldsberry
Michael Goodwin
Clyde Gosnell
Christine and Robert Gotfried
Glenn and Jacqueline Graham
Leonard and Phyllis Greenberg
Mark Gresham
Helen Grettler
Gregory Grimm
Jeffrey and Judith Grimm
Norma Ruth Groh
Scott Gutridge
Wade and Julie Guzdanski
Linda Haines
Terry Halley
Stephen Hankison
David Hardy
Angela Harkness
Teresa Harper
Joe Harrington
Jennifer Harris
Nancy Harris
Stanley and Doris Harrison
Jean Hawkes
Charlene Hayden
James and Rita Haynes
William and Mary Heck
Mary Lou Heinrich
Ronald and Mary Henry
Joann and Edwin Hensley
Glenn and Nancy Hettterscheidt
Edwin Hetzer
Dale and Gloria Heydlauff
Nora Hiland
Ronald and Marilyn Hinebaugh
Kenneth and Nicole Hines
Jan and Tom Hodson
Kathie and David Hoffman
Dorothea Hoffner
Connie Holcomb
Larry and Sheryl Holdren
Alma and Ron Hoopes

THANK YOU to all who made a difference by giving to a fund at the Foundation!

January 1 through December 31, 2016

Jay Hostetler and Cherri Hendricks
Sarah Hubbell
Cheryl and Joe Hubble
Sharon Huffman
Edith Hughes
Martin Hughes and Mary Ann Schindler
Mary Jo and Steven Hull
Fran and Darrell Hutchinson
Hillary Hutchinson
Joseph Ipacs
Vicki Irwin
Shannon Italia
Cynthia Jacobs
Melissa Jamison
Karen Jennings
James and Eva Johnson
Todd Johnson
Tom and Joyce Johnson
Brian and Jeanne Jonard
Barbara and Fred Jones
John and Janise Jones
John Josephson
Kathleen Kanipe
Brian Katz
Ross Kayuha
Heather and Chad Keesee
Miriam Keith
Becky Kellum
Kathryn Kelly
Richard C. Kendall, Jr.
Gloria Kent
R. Kenneth Kerr III
Christopher and Lynda Keylor
Greg Kidwell
Virginia Kinney
Kathleen Kissel
Betty and Donald Kitchen
Tracy Kitts
Emily Klein
John and Theresa Klein
Patrick Klein
Christine Knisely
Janet Koehler-Wade
Theresa Kusher
Warren and Dorothy Lapp
Suzanne and Charles Larson

Richard Lawrence
Susan Lawrence
Larry Ledford
Lori Lee
The Lestini Family
Michael Lisi
Sergio Lopez
Philip Ludwig II
Bess and John Lusk
Kim Lust
John Lyons
Vee and Steve Lyons
Jeffrey Lyttle and Cathy Mayne Lyttle
William and Regina Mahle
Dr. James Mahoney
Gus and Jan Maragos
Kathryn and Paul Maragos
Elisabeth and Keven Martin
Sherrill and Charles Massey
Timothy and Pamela Massie
Sandra and Craig Mathews
Keith Maxwell
William and Carole McAfee
Kevin and Joni McCune
Sharon McDermott
J. Richard and Susan McFarland
John and Judy McGaughey
Lois McIntire
Letitia McKelvey
Brenda McKnight
James McLaughlin
Robert and Gayle McLaughlin
John Mecom Jr.
Virginia Meharg
Eric Meister
Hillarie and Joshua Michaels
Connie Miley
David and Cathy Miller
Robert Miller
C. Ann and Kinsey Milleson
Dale and Kelly Milligan
David and Anna Mizer
Jane Mong
Christopher Moody
Phyllis and Keith Moody
Christopher Mooney

David Moore
Sharon Morel
C. David Morgan
John Morgan
Ann and Richard Moseley
Judith Mosier
Debra and Timmy Mosser
Carol and Thomas Mount
Ryan and Tara Moyer
Dr. Douglas and Martha Myers
Eric Myers
Joseph and Valorie Myers
Kelly Myers
Lori Napier
Richard Nash
Wilma Nelms and Mary Smith
Malory Nelson, Jr.
Richard and Karen Newlon
Tamara Lea and Robert Nichols
Bill and Susan Noll
Kristin Noneman
Roderick and Cathy O'Donnell
Paul and Joyce Oechsle
Jennifer Greenwald Ohara
Ariana Olavarrieta
Joseph and Paula Oliverio
Don and Gail Olson
Dolores Opich
Jack Park
Betsy Lee Patterson
Catherine and John Paulus
Denise and John Payne
Cynthia Pekkanen
Jack Pesicka
James Pierce
Debi Vanway Pingle
Alice and Tom Polo
Anita and Steven Pompey
Phillip and Mary Pope
Mary Jane Pope-Albin
Barbara Radekin
Gary Rajan
Robert Rasor
Robert Redfield
Linda Remmert
Bruce Renard

George Richards and Deb Bower
Marion and Patricia Riffle
William Riffle
Brian and Anne Ritchey
Cheryl and Roger Ritton
Emmet Robertson
Audrey Robinson
Michelle Robinson
Alvin Rodack
William Roddick and Whitney Crane
Joanna Rogers
Erica and John Rohrich
Ruth Ann Roth
Lynn Last Rothstein and Dr. Mark Rothstein
Jennifer and Travis Roton
Thomas Ruebel
Lisa Ryan
Joe Sabo
Peggy Sanders
Kevin Scheel
Christiane and Mike Schmenk
Susan and Phillip Schneider
James Schoultz
Robert and Blythe Schubert
David Scragg
David and Carrie Scragg
Arlean and John Selvy
Elizabeth Seng
Maureen Sharkey
Brenda and James Sharp
Ben Shaver
Joan and Lester Sheehan
Holly and Todd Shelton
Amy Shepherd
Michael Sheppard
Todd Shinkle
Natalie Shoentett
Randy and Rita Shrider
Robert and Nancy Shumaker
Eva Sieber
Natalie and Nathan Simmons
Dennis and Laura Sizemore
Jane Ann and Edward Slagle
Sally Slattery
B.J. Smith

THANK YOU to all who made a difference by giving to a fund at the Foundation!

January 1 through December 31, 2016

Richard Smith
Thelma Grace Smith
Rita Spiers
Kaye and Richard Spiker
Susan Spinelli
Fred and Karen Steinbrecher
Betsy Stevenson
Jennifer Stewart
Joly Walton Stewart
Michal Stimson
William and Jeri Stimson
Alan and Susan Stockmeister
Janet and Dan Stoffel
Daniel Stojevich
Kurt Strickmaker
Ron and Calista Strickmaker
Cheryl and John Stump
Loran and Shirley Stutz
Terence and Deborah Sullivan
Steve Suver
Carol and Timothy Swart
Judith Tansky
Shawn and Elysia Taylor
Christine Thomas
Leigh Thomas
Theodore Thomas
Margo and Joseph Thompson
Orville Thoroughman
Michele Timmons
Dr. Jerry Titko
Kenneth Triplett
Tom and Jan Trump
Richard Tuttle
Sergio Ulloa
Cintia Ulloa-Hays
Kelly and John Vernon
Lindsay Vincent and Michael Balsimo
Mark Vineis
Rick Wachhut
Matthew Walla
Robert and Marcia Wallace
Martha Walther
Kenneth and Carol Ward
Donald and Judy Warehime
Matt Warende
Louise "Omie" Warner

Joseph and Judith Webster
June Wells
Edward Wen
Julie Werring
John West
Patricia Dorton Whitaker
Neomia White
Dr. Rae White
Pat Whittington
Phyllis Whobrey
Ricky and Charla Whobrey
Courtney Wilkens and Simon Hogan
Paula Williams
Sam Williams
Steven and Karen Williams
Robert and Tammy Wilson
Wilma Winkler
Darlene Winland
RD and Steph Winland
John Winnenberg
Lilian Winnenberg
Sarah Winters
Janice Wolfe
John Wolff and Tanny Crane
Kevin Wood
Robert and Elizabeth Woodruff
Robert and Marjorie Woodward
Karen Woodworth
Greg Workman
Maribeth Wright
Michelle and Brian Yanok
Rhonda and Raymond Young

ORGANIZATIONS

A&K Ready Mix
Advanced Food Systems
AEP
Agri Gypsum Lime Services
Air Products Foundation
American Legion Auxiliary Post 58
Athens Boarding Kennel
Attitude LTD.
AurGroup Financial Credit Union
Bank of America Foundation
Batavia Local School District
Battelle

Bellisio Foods
Belmont Ridge Christian Church
Belpre Area Chamber of Commerce
Belpre Woman's Club
BEMIS Company
Bidwell Trustworthy Hardware
Bob Evans Farms
The Louis P. and Antoinette Bonasso
Fund of The Catholic Foundation
Bruce Packing Company
Byers, Minton, & Associates
Byesville Rotary Club
Cambridge High School Class of 1939
Cambridge Singers
Canneto Studios
Cardinal Health Foundation
The Carmichael Agency
Centre Partners Management
Century Distributors
Century National Bank
CGI Technologies
Channel Trust
Chapel Hill Church
Chardon Laboratories
Chris Fisher and Sons Trucking
Citizens Deposit Bank
Codino's Foods
Coffman Insurance Agency
Columbus Investment Advisory
Columbus Vegetable Oil
Commac Foods, Inc. (Frisch's Big Boy)
Community Foundations, Inc.
Cox Seed Sales
Crane Group
Creature Weekend
Crisenberg Electric
Crooksville Arts Council
Crothers Electric, Inc.
Crown Excavating
Dairy Barn Arts Center
Dakota Growers Pasta Company
Darrell Caldwell Trucking
William H. Davis, Dorothy M. Davis,
William C. Davis Foundation
Dayton Firefighters Federal Credit Union
Dennis & Nelson Insurance Group

East Guernsey Local School District
Eckert Cold Storage
EcoLab
E.P. Ferris & Associates
Farmers Bank and Savings Company
Feed Stop
Field of Hope Community Campus
First Baptist Church
Flour-B&W Portsmouth LLC
Foster Sales and Delivery
Francis J. Paulus Insurance Agency
Fratellis/Tuscany Italian Restaurants
Gallia County Agricultural Society
Gallia County Local Board of Education
Genesis Healthcare System
Genesis Human Resources
Graham & Graham Company
Greater Columbus Arts Council
Greater Columbus Convention and
Visitors Bureau
Greater Columbus Sports Commission
Green Tire and Exhaust
Guernsey County Board of
Developmental Disabilities
Gulfport Energy Corporation
Gurrentz International Corporation
H&R Block
Haffelt's Mill Outlet
Hall Financial Advisors
Halliday, Sheets and Saunders
Hannibal United Methodist Women
Hazel Syphers Estate
Heritage Financial and Investment
Services
Holzer Pediatricians
Ildreth Rebekah Lodge No. 847
Immanuel United Church of Christ
J&J Appraisal Services
Jeni's Splendid Ice Creams
JPMorgan Chase Bank
Kershaw Foundation Charitable Trust
Kirker Insurance
Koch Foods of Cincinnati
Kokosing Construction Company
Korner Convenient Store
Kroger

THANK YOU to all who made a difference by giving to a fund at the Foundation!

January 1 through December 31, 2016

Kyger Dental Associates
L&L Scrap Metals Recycling
Lecrone Sanitation
Lee Industries
Leslie E. Small Trucking
LS 2 Printing
M&G Polymers USA
Marietta Welfare League
Mark Porter Ford
Mark Porter GM Superstore
Marsh & McLennan Agency
Maysville Local School District
McLain, Hill, Rugg & Associates
Micheli, Baldwin, Northrup, LLP
Milliron Clinic
Montgomery Trucking Company
Morgan Stanley
Mount Tree Service
MRM Construction
MS Consultants
Muskingum County Community Foundation
National Bank of Adams County
Nationwide Children's Hospital
Nelsonville Restoration Foundation
New Life Church Benevolence Missions
Nikken Foods USA
Noe and Saunders
North Valley Bank
Norris Northup Dodge
Ohio Credit Union League
Ohio Regional Development Corporation
Ohio University Credit Union
Ohio Valley Supermarkets
OhioHealth
Old Mill Craft Beer
One Source Food Solutions
Optimist Club of South Columbus
Osteopathic Heritage Foundation of Nelsonville
Passion Play Morgan County
Peoples Bank
Phalarope Fund of the Community Foundation of Sonoma County
Pleasant Valley Hospital
PNC Foundation

Precision Signs & Graphics
Prime, Inc.
Princeton-Bell Company
Pythian Sisters
Reliable Staffing Services
RESA 5
Riceland Foods
Riesbeck's Food Market
River High School Alumni Association
Riverbend Animal Clinic
Rocky Brands
Ron Rothenbuhler Trucking
Ross County Board of Developmental Disabilities
Rotary Club of Belpre
Roundtree Rentals
RVC Architects
Safe Auto Employees
St. Paul's Trail Run Ladies Aid Society
Sardis Community Welfare Club
Save-A-Lot Bidwell
Servpro of Jackson and Gallia Counties
Settlers Bank
Shake Shoppe
Sharefax Credit Union
Shawnee Alumni Association
Shipman Heating and Cooling
Smith Chevrolet
Smith Financial Advisors of Hilliard Lyons
Southern Local School District
State Farm Insurance Agency
State Farm Mutual Insurance Company
Statoil Energy
Super 8
Swiss Valley Farms
The Community Bank
The Homan Foundation
The Ohio State University
The Ohio Valley Bank
Thompson Insurance
Thrivent Financial
Time Warner Cable
TLW: Transportation Leasing and Warehousing
Tommy Time Productions

Total Quality Logistics
Tri State Fireworks
Tri-County Career Center
Tri-Valley Local Schools
Trinity United Church of Christ (Lewisville)
Triple T Transport
Tuscany Italian Restaurant
United Healthcare Systems
Unique Auto Care
U.S. Durum Milling
Village Bakery Cafe
Vorys, Sater, Seymour and Peese
Welsh Electric
WesBanco Bank – Southeast Ohio Region
WesBanco Bank – Wheeling
West Union High School Alumni Association
WestRock
Wiseman Agency
Wood County Board of Education
Woodland Centers
Woodsfield Kiwanis Club
Woodsfield True Value Home Center
WSA Studio
Zane Foodmart
Zion United Church of Christ

IN MEMORY OF

David Altizer
Ora Anderson
Fred Baker
Nola Baker
Bernice Bolyard
John H. Brodt
Janice Bryant
Hazel Burkhardt
Bill Campbell
Fred Cavey
Charles DeLawder
Elizabeth Reber Dunkel
Ralph E. Dunkel
William (Bill) Dunlap
Nancy Groom
Becky Hart

Dale Hileman
David Hostetler
Regina Kettler
Betty Kissel
John Kissel
Mary Knauer
Dr. Quentin Knauer
Dea Knight
Fred Kreitz
Vicki Lanning
Martha Laufman
Tessa Logan
Anne Louiso
Ben Lowder
Katie Massie
Joyce Ellis McClanahan
Robert Miller, MD
Donald R. Myers
Patrick Rose
Marjorie Speidel
Tommy Joe Stewart
Elaine West
Jack Workman

IN HONOR OF

Lizzie Atzberger
John Atzberger
Janet Campbell
Marianne Campbell
Jeff Chaddock
The Dog Studio
William (Bill) Dunlap
Helen Grettler
Becky Hart
David Hostetler
Judy Johnson
Miriam Keith
Dick Kendall
Linda (Springer) Kendall
Nada Kerr
Mary Knauer
Dr. Quentin Knauer
Tessa Logan
Sue Lewis
Ron Strickmaker

HELPING YOU WITH YOUR CLIENTS

FAO was founded on the belief that we can all create greater opportunities for the citizens and communities of Appalachian Ohio when we work together. There are many partners across and beyond our region who are instrumental to FAO's mission.

We would like to thank our Professional Partners who are an essential part of connecting their clients with the philanthropic services of the Foundation for Appalachian Ohio. These partners include financial advisors, attorneys, accountants, and insurance agents. We are honored to help all donors make a difference in what is closest to their hearts and are here to help our Professional Partners serve their clients with philanthropic expertise to aid personal planning and positively impact Appalachian Ohio.

INVESTMENT ADVISORS

Teresa Cowden, *Edward Jones*
Daniel Engard, *Wells Fargo Advisors*
Tyler Hawk, *Edward Jones*
Greg Hossman, *Peoples Bank*
Ed Lowry, *Edward Jones*
Brent Markley, *Stratos Wealth Advisors*
Channing McAllister, *Edward Jones*
Pete Mikula, *Edward Jones*
David Slates, *Slates Wealth Management Group of Wells Fargo Advisors*
Charles Schwab

PROFESSIONAL PARTNERS

Bricker & Eckler LLP

The Chaddock Group of Ameriprise Financial Services, Inc. – Jeffery Chaddock
Robert J. Christie, *Attorney John Gerlach & Company LLP*
Heritage Financial & Investment Services, LLC – Nikki Baker-Lude
HPM Partners LLC – Bob Smith
Lilley & Saving Co., LPA – Abigail Saving
McLain, Hill, Rugg & Associates, Inc. – Tim McLain and Megan Durst
The Moyer Group – Merrill Lynch – Mark Moyer and Ryan Moyer
Nelsonville Home & Savings Bank – Steve Cox
Rea & Associates – Maribeth Wright
John A. Wells, *Attorney*

Contact the Foundation for Appalachian Ohio at 740.753.1111 to become a part of our Professional Partners group and visit www.AppalachianOhio.org to learn more about the services available for Professional Partners and their clients.

Did you know?

Donors establishing a fund over a certain threshold may recommend FAO use their preferred investment advisor to manage the fund. This is one of the ways FAO's circle of Professional Partners grows.

THANK YOU

to all who volunteered their time and talent in 2016:

Deborah Adam
Ada Adams
Jean Andrews
Darnita Bradley
Tom Bork
Jenni Bovyak-Lewis
Jessica Branner
Joseph Campbell
Marianne Campbell
Misty Casto
Debbie Cherry
Ray Chorey
Ryan Collins
Julie Cohara

Barbara Conover
Mike Davis
Chris Demel
Pat Dillon
Carolyn Fisk
Kate Fox
Teresa Fulk
Gary Goosman
Sharon Hatfield
Amanda Hedrick
John Hemmings
Van Henry
John Hoag
Jan Hodson
Crystal Howard
Joseph Ipacs
Melissa Jamison
Cindi Kerschbaumer
Brandon Kern
Hayley Kick
Myles Kipphen
David LaPalombara
Kim Lovejoy
Carla Lowry
John Lyons
Doug McCoard
Eric Myers
Daniel Neff
Sherri Oliver
Susan Phillips
Karen Pidcock
Paul Prater

Kris Puskarich
Jim Salyer
Melody Sands
Jim Schoch
Barb Shelton
Jesse Stock
Cory Taylor
Sergio Ulloa
Mary K Walsh
Paul Webb
Sarah Webb
Lauren Worley
Jack Wright
Rebecca Zurava

Community Foundation for Perry County Fund

Janine Conrad
Judge Luann Cooperrider
Jeff Dennis
Tony Fiore
G. Courtney Haning
Deb Hutmire
Mayor Tom Johnson
John McGaughey
Tim McLain
Chris Mooney
John Winnenberg
Kevin Wood

Gallia Community Foundation Fund

Shayna Chapman
Melissa Clark
Matt Johnson
Jodie McCalla Penrod
Robbie Pugh
Brynn Saunders
Patrick Saunders
Scott Saunders
Jimmy Wiseman

Guernsey County Foundation Fund

William Black
Cindy Bond

Dave Caldwell
Andrew S. Dix
Jeff East
Judge David A. Ellwood
Miguel Genel
Daniel Padden
David Wilson
Maribeth Wright

Harrison County Community Foundation Fund

Allison Anderson
Lori Milleson
Scott Pendleton
Bob Positano
Matthew Puskarich
John Tabacchi

Jackson County Community Foundation Fund

Sandy Borden
John Jones
Cindy Kidd
Susan Stockmeister
Carol Wright

Monroe County Community Foundation Fund

Nikki Baker-Lude
Ryan Moyer
Karena Reusser
Gwynn Stewart

Morgan County Community Foundation

Melanie Baldwin
Quincy Robe
John Wells
Kelsey Wells
Dick Wetzel
Mike Workman



FOUNDATION FOR
APPALACHIAN OHIO
Give. Grow. Create.

STATEMENTS OF FINANCIAL POSITION
HISTORICAL COMPARISON

	December 31, 2016 Unaudited	December 31, 2015 Audited	December 31, 2014 Audited	December 31, 2013 Audited	December 31, 2012 Audited
ASSETS					
Cash and Cash Equivalents	\$ 3,159,484	\$ 2,163,415	\$ 1,901,421	\$ 1,665,382	\$ 1,033,958
Investments	20,801,999	17,388,478	16,756,856	13,028,613	10,193,890
Pledges Receivable and Other Assets	1,131,395	1,398,104	1,533,290	166,734	249,609
Property and Equipment, net	502,588	535,166	559,309	589,234	663,210
TOTAL ASSETS	\$ 25,595,466	\$ 21,485,163	\$ 20,750,876	\$ 15,449,963	\$ 12,140,667
LIABILITIES AND NET ASSETS					
LIABILITIES					
Liabilities	\$ 213,993	\$ 85,656	\$ 124,058	\$ 50,679	\$ 45,888
Organizational Funds Held for Others	3,243,532	2,035,545	1,852,481	1,815,798	1,579,998
TOTAL LIABILITIES	3,457,525	2,121,201	1,976,539	1,866,477	1,625,886
NET ASSETS					
Current					
Operating	2,718,474	2,901,641	3,183,641	2,434,474	2,428,546
Donor-Advised and Designated	2,448,495	2,660,298	3,304,735	2,810,133	2,259,408
Board Designated					
Operating Reserve	1,432,628	1,389,512	1,333,208	-	-
Operating Endowment	767,481	794,831	801,990	748,752	649,608
Endowments					
Pillars of Prosperity	299,204	115,989	14,923	-	-
Scholarships	5,410,467	5,132,133	5,188,840	4,214,575	2,520,703
Donor-Advised and Field of Interest	5,608,044	4,136,644	3,045,977	1,701,836	1,278,586
FAO Discretionary Grantmaking Funds	1,173,552	1,157,592	1,098,431	1,076,958	994,348
Other	2,279,596	1,075,322	802,592	596,758	383,582
TOTAL NET ASSETS	22,137,941	19,363,962	18,774,337	13,583,486	10,514,781
TOTAL LIABILITIES AND NET ASSETS	\$ 25,595,466	\$ 21,485,163	\$ 20,750,876	\$ 15,449,963	\$ 12,140,667

OUR TEAM

“I chose FAO because they had the unique combination of competence and kindness.”

– Joe Ipacs, Susan K. Ipacs Nursing Legacy Scholarship Fund Founder

2016 BOARD OF TRUSTEES

OFFICERS

Chair

Ronald Strickmaker

Athens County
Partner, StoreFlix!

Vice Chair

Christiane W. Schmenk

Franklin County
Of Counsel, Bricker & Eckler, LLP

Secretary

Ron Cremeans

Washington County
VP & General Manager, Plant Operations, PJM Gas Operations, Dynegy, Inc.

Treasurer

TJ Conger

Franklin/Jackson County
Partner, John Gerlach & Company, LLP

MEMBERS

Mike Brooks

Athens County
Chairman of the Board & Interim CEO, Rocky Brands, Inc.

Jeffery D. Chaddock

Franklin/Athens County
Private Wealth Advisor, The Chaddock Group/Ameriprise Financial Services, Inc.

Terry P. Fleming

Franklin/Washington County
Retired Executive Director, Ohio Petroleum Council

Nancy Lahmers

Franklin/Guernsey County
Retired Executive Director, The Ohio State University – Fisher College of Business

Mike Moore

State of Oklahoma
Chief Executive Officer, Gulfport Energy Corporation

Alan Stockmeister

Jackson County
Chairman, Elemetal, LLC; Manager, OPM Metals, LLC; Chief Executive Officer, Echo Environmental, LLC

David Wilhelm

Franklin/Athens County
Chief Strategy Officer, Hecate Energy

EMERITUS

Marianne Campbell

Gallia County
Retired Executive Vice President, Holzer Medical Center

Robert “Mick” McLaughlin

Clermont County
Retired Associate Dean, University of Cincinnati

STAFF

Cara Dingus Brook

President & CEO

Maureen Sharkey

Executive Assistant and Associate Secretary of the Board

FINANCE & ADMINISTRATION

Martin Adam

Chief Financial & Administrative Officer

William Courson

Chief Investment Officer

Phyllis Moody

Controller

Courtney Giffin

Accounting Clerk

DONOR SERVICES

Holly Shelton

Vice President of Gift Planning

Heather Keesee

Vice President of Gift Planning, Southern Ohio

Richard Duncan

Director of Outreach, Guernsey, Perry, and Morgan Counties

Jim Rocchi

Director of Outreach, Eastern Ohio

Lesa McDaniel

Gift Planning Associate

COMMUNICATIONS & PROGRAMS

Megan Wanczyk

Vice President of Communications & Programs

Kelly Morman

Communications & Programs Coordinator

CONTACT US

**Foundation for
Appalachian Ohio**

PO Box 456
35 Public Square
Nelsonville, OH 45764

Phone: 740.753.1111
Fax: 740.753.3333
Email: info@ffao.org

www.AppalachianOhio.org

FOUNDATION FOR APPALACHIAN OHIO

VISION

For the citizens of Appalachian Ohio to live
in a region abundant with possibilities.

MISSION

To create opportunities for Appalachian
Ohio's citizens and communities by
inspiring and supporting philanthropy.



35 PUBLIC SQUARE • NELSONVILLE, OH 45764 • 740.753.1111 • www.AppalachianOhio.org