



Lawrence County Community Foundation

2024 Annual Report

Advancing a flourishing Lawrence County



FOR A FLOURISHING *Lawrence County*

About us

The Lawrence County Community Foundation

(LCCF), a geographic affiliate of the Foundation for Appalachian Ohio, provides a way for anyone with a heart for Lawrence County to support our people and communities, today and for years to come.

Donor generosity fuels the work of doers who give their time and talent to meet our communities' greatest needs and opportunities – all while building a strong foundation for Lawrence County's future.

With the support of our donors, we award grants annually to nonprofit and public organizations for projects and programs that advance opportunities across five funding areas, known as our Pillars of Prosperity.



Arts & Culture



Community
& Economic
Development



Education



Environmental
Stewardship



Health
& Human
Services

Our investments improve health, create educational opportunities, advance economic development and environmental stewardship, and provide access to arts and cultural experiences.

Our committee

- Sandy Blackburn
- Donna Dingus
- Shirley Dyer
- Dan Evans
- John Ferguson
- Kay Ferguson
- Joe Freeman
- Jim Galloway
- DeAnna Holliday
- Dan Jeffries
- Bill Jessie
- Ralph Kline
- Mike McKee
- Shannon Smith
- Terri L. Taylor

Want to learn more?

For more information about planned giving, to make a gift to LCCF or to create a fund to support a cause closest to your heart, please contact us!



740.753.1111



Lawrence@ffao.org

www.AppalachianOhio.org/Lawrence



In summer 2024, LCCF committee members met with representatives from Macedonia Missionary Baptist Church, Ohio's first Black church and the only surviving antebellum Black church in the state. LCCF is one of the many partners who have invested in the preservation of the Lawrence County church, which will return to service this year as a historic site and community center.

2024 Grants

The Lawrence County Community Foundation, in partnership with the Foundation for Appalachian Ohio, awarded six grants, totaling \$10,000, in 2024.

Chesapeake Band Boosters

The Chesapeake High School "Peake of Performance" Marching Band is an award-winning group of approximately 75 student musicians in grades 7-12 who perform at Lawrence County athletic and community events as well as local, regional and state competitions. This grant is funding two wireless microphone systems and a wireless microphone with an earset for the band.

Harvest for the Hungry Food Pantry

Since 1992, Harvest for the Hungry Food Pantry in Ironton has been on a mission to fill the bellies of Lawrence County residents who do not have enough to eat – operating entirely on donations. This grant is purchasing food for the nonprofit's monthly distributions and feeding a growing need in our communities.



Solo performances during Chesapeake High School "Peake of Performance" Marching Band events are going to be amplified, thanks to new equipment funded by an LCCF grant.



2024 Grants

Kiwanis of Greater Ironton

Two minutes. That's how much time students at the Open Door School in Coal Grove are allotted on the playground's swing set because there are only two swings. This grant is helping to upgrade the swing set and provide additional swings at the school that serves students throughout Lawrence County.

RLB Ministries

Each week, RLB Ministries' Backpack Buddies program provides 550 children in 19 Lawrence County schools with meal bags to nourish them over the weekend. The nonprofit also operates an emergency food pantry, helping families who find themselves in crisis situations. This grant is funding the purchase of food for this much-needed assistance.



Students at the Open Door School will be enjoying a little more time on the playground, thanks to an LCCF grant to upgrade and add swings.



You can feel – and see – the hometown love in Chesapeake

In 2024, the volunteers behind Hometown Love of Chesapeake unveiled their latest efforts to improve and beautify the village. The group constructed a new stone flower bed around the "Welcome to Chesapeake" sign that greets approximately 12,000 vehicles entering the village from the Sixth Street bridge and placed additional flowerpots around town – with plans to plant flowers in them each spring and decorate them in the fall. The group also spruced up Village Hall with some new paint, lights, plants and a bulletin board.

These acts of hometown love received funding from a 2023 LCCF grant, an investment in volunteers who believe community beautification fosters pride, inspires others to follow suit and entices people to live, work, invest and play in Lawrence County.

Third and Center

In late 2023, Third and Center assumed leadership and financial responsibility of the Ironton Senior Center, a gathering space dedicated to the well-being, engagement and socialization of our seasoned residents. This grant is helping to fund the center's program coordinator and meal services – and advancing the revitalization and growth of this resource for our senior community.

Young Life (Proctorville)

Young Life (Proctorville) provides a positive and nurturing space where Lawrence County youth can build relationships, develop leadership skills, and grow personally and spiritually. This grant is helping to maintain and grow the organization's weekly club meetings, providing a consistent source of support, encouragement and guidance that helps teens navigate the challenges of adolescence.



A 2024 LCCF grant is helping Third and Center provide nutritious meals to seniors participating in programming at the Ironton Senior Center.

Community highlight

In May 2024, the theater department at Tri-State STEM+M Early College High School delivered four performances of Disney's "The Little Mermaid" – with a goal of harnessing the positive impact of the arts on mental health and promoting mental wellness among Lawrence County residents.

More than 350 people attended the performances, and approximately 40 students participated in the production, serving as the cast, crew and production assistants and fostering a sense of community and belonging. After the performances, students even led group discussions centered on the arts and its impact on mental health.

A 2023 grant from LCCF provided funding for set design, costumes and technology, supporting an experience and inclusive space for students to express themselves, learn resilience and connect with the community.



Our impact



**\$2.8
MILLION**

In assets for the people
of Lawrence County



**\$50,000
AWARDED**

Across LCCF's family
of funds since 2022



**\$18,250
GIVEN**

In grants and
scholarships in 2024*



**10
FUNDS**

Partnering with LCCF
in service to
our community

Our family of funds

- Lawrence County Community Foundation
- Arc of Appalachia Preserve Stewardship Fund for Gallia-Lawrence-Jackson Counties
- Collins Career Technical Center Alumni & Friends Fund
- David Ryan Mitchell Legacy Scholarship Fund
- Dr. Karen LaRoe Scholarship
- Hand in Hand The Clonch Legacy Fund for Lawrence County Beautification
- Janice Large Wheeler and Richard Wheeler Foundation for Science and Technology Education Fund
- Leona "June" Freeman Legacy Fund
- Macedonia Missionary Baptist Church
- Simeon and Alma Mullins Legacy Fund for Rock Hill Local School District

Answering the call to lead and serve in Lawrence County

In 2023, FAO and its affiliate foundation partners welcomed the inaugural class of Growing Home Fellows, including Zoie Clay, Ellen Fields, Isaac Floyd and Alison Ozgur, who live and/or work in Lawrence County. The fellows have committed to live, work and volunteer in their communities for five years and receive a financial stipend and participate in a leadership program that includes coaching. In 2024, the fellows began implementing service projects in our communities, including:

Zoie Clay



A resident of Ironton, Zoie Clay is a 4-H youth development program assistant who works in Lawrence County schools as a supplemental resource, teaching STEM and healthy living classes. Through her fellowships, Zoie is serving as secretary of Third and Center's board of directors. In 2024, she contributed to and led several community events, including a new art program for the Lawrence County Community Baby Shower, while also collaborating on grant requests to support the Ironton Senior Center, which now operates under Third and Center's leadership. In the coming year, she will be working with Third and Center to transform a vacant warehouse building into a thriving community center.



View the 2023-2024 Growing Home Fellowship Impact Report and see how we are investing in our region's next generation of community builders and leaders.

*This amount will increase as each fund comes under spending policy. Our goal is to establish and grow permanent charitable resources that provide continuous investment in Lawrence County. In alignment with community foundation best practices, all endowment funds are invested and grow for 12 quarters before any grants are awarded from them.



HELP SUPPORT THE PEOPLE, PLACES, PROGRAMS AND FUTURE OF LAWRENCE COUNTY

**Gifts to the Lawrence County Community Foundation are
tax-deductible and can be made in a variety of ways.**

GIVE TO LCCF

Gifts to the Lawrence County Community Foundation's endowment fund permanently grow grant funding, with priorities locally determined, for nonprofit and public organizations working to increase quality of life in our communities. Your generosity supports efforts that improve health, create educational opportunities, advance economic development and environmental stewardship, and provide access to arts and cultural experiences.

CREATE A FUND

Provide sustained support for the causes closest to your heart by establishing a named fund through the Lawrence County Community Foundation. We can help you create endowments to support specific charitable organizations or schools; scholarships to provide educational opportunities; donor-advised funds for family giving; corporate funds for a company's charitable grantmaking; and more.

LEAVE A LEGACY

Include charitable giving in your estate planning, giving you the peace of mind of knowing the communities and causes closest to your heart will continue to receive your support beyond your lifetime. The Foundation for Appalachian Ohio can assist you and/or your advisors with charitable research, provide options and create necessary documents or language for your plan.

How to make a gift



Mail to:

Lawrence County Community Foundation
c/o Foundation for Appalachian Ohio
35 Public Square, Nelsonville, OH 45764

or



Online:

www.AppalachianOhio.org/Lawrence
or www.tinyurl.com/GiveLawrence

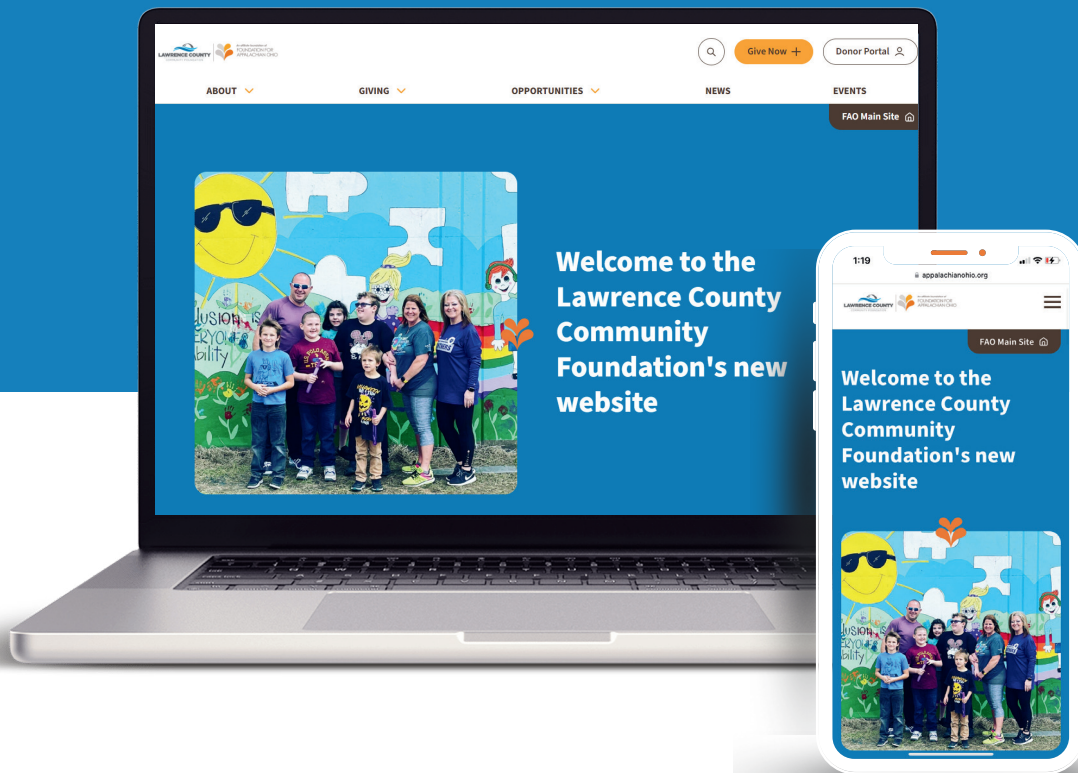
For information about establishing a named fund or planned gift, email Lawrence@ffao.org or call 740.753.1111.

GIFTS OF ALL SIZES AND KINDS – CASH, STOCK, REAL ESTATE, ROYALTIES OR QUALIFIED CHARITABLE DISTRIBUTIONS FROM IRAS – MAKE A DIFFERENCE!



Our new website!

LIVE NOW



www.AppalachianOhio.org/Lawrence



Featuring more stories of impact, easier navigation and a lot of inspiration, **our new website** tells the story of the Lawrence County Community Foundation and a community of givers who are championing our people and communities. Discover how far we've come, where we're going and how you can leave your legacy for generations to come.